

Воздуховыпускной автомат СИТЕМА

Технические характеристики

Архангельск (8182)63-90-72
Астана (7172)727-132
Астрахань (8512)99-46-04
Барнаул (3852)73-04-60
Белгород (4722)40-23-64
Брянск (4832)59-03-52
Владивосток (423)249-28-31
Волгоград (844)278-03-48
Вологда (8172)26-41-59
Воронеж (473)204-51-73
Екатеринбург (343)384-55-89
Иваново (4932)77-34-06

Ижевск (3412)26-03-58
Иркутск (395)279-98-46
Казань (843)206-01-48
Калининград (4012)72-03-81
Калуга (4842)92-23-67
Кемерово (3842)65-04-62
Киров (8332)68-02-04
Краснодар (861)203-40-90
Красноярск (391)204-63-61
Курск (4712)77-13-04
Липецк (4742)52-20-81
Киргизия (996)312-96-26-47

Магнитогорск (3519)55-03-13
Москва (495)268-04-70
Мурманск (8152)59-64-93
Набережные Челны (8552)20-53-41
Нижний Новгород (831)429-08-12
Новокузнецк (3843)20-46-81
Новосибирск (383)227-86-73
Омск (3812)21-46-40
Орел (4862)44-53-42
Оренбург (3532)37-68-04
Пенза (8412)22-31-16
Россия (495)268-04-70

Пермь (342)205-81-47
Ростов-на-Дону (863)308-18-15
Рязань (4912)46-61-64
Самара (846)206-03-16
Санкт-Петербург (812)309-46-40
Саратов (845)249-38-78
Севастополь (8692)22-31-93
Симферополь (3652)67-13-56
Смоленск (4812)29-41-54
Сочи (862)225-72-31
Ставрополь (8652)20-65-13
Казахстан (772)734-952-31

Сургут (3462)77-98-35
Тверь (4822)63-31-35
Томск (3822)98-41-53
Тула (4872)74-02-29
Тюмень (3452)66-21-18
Ульяновск (8422)24-23-59
Уфа (347)229-48-12
Хабаровск (4212)92-98-04
Челябинск (351)202-03-61
Череповец (8202)49-02-64
Ярославль (4852)69-52-93

Technical Information TI-Z10

Auto-bleeder

Purpose

Even though every hydraulic specialist knows that each installation is to be bled carefully after final assembly, over and over again seal damages occur which can be identified as a result of combustion processes within the pressure chamber (Diesel effect). On lip seals, you can see those damages as cracks in the seals along the bottom of the seal groove (Fig. 4), which start at the groove, making their way all the way through to the back of the seal. On seals damaged in such a way, you can regularly notice a burnt smell, sometimes you can also see burn marks on the crack edges.

The metal shaft surface is also often damaged (Fig. 4). You can find scratches in the direction of movement (expansion channels) or impact holes (similar to cavitation).

Other devices, like hydraulic cylinders, are more or less flushed through in each cycle. The remaining air is carried back to the tank where it can be exhausted.

In a clamping head, every activation often means that the oil/air column is pushed a little back and forth only in the line. As a result, air inclusions will not be removed, they rather collect at higher positioned places in the form of foam, possibly also within the pressure chamber of the Clamping head. Depending on the rate of the pressure rise etc. it may come to an ignition point due to compression.

A steep pressure drop is also dangerous, when gas (previously diffused into the seal material under high pressure) is expanded very fast. In this case, the seal material can be damaged from the inside.

The usual one-time manual bleeding of the system is not always enough, especially when the supply line to the Clamping head is vertical and air enrichment occurs. In this case, an auto-bleeder is recommended.

When properly applied the main cause for early seal failure can be fought effectively.

Function

The function of the auto-bleeder is based on the difference of viscosity of oil and air. A piston located in the bore of the housing with defined radial clearance, works with pressure increases and decreases. The piston will open the inlet with increases in the pressure during start-up from zero to over approx. 2 bar. Accumulated air moves out through the clearance around the piston while following fluid, with its higher flow resistance, will close the outlet by instantly pushing up the piston.

The outlet stays closed, until during pressure decrease, the pressure falls below about 2 bar, then the piston moves down. During the transition, fluid is leaking out. The higher the gas concentration, the slower the pressure decrease will take place. Thereby, remaining oil-air-foam will be removed from the system.

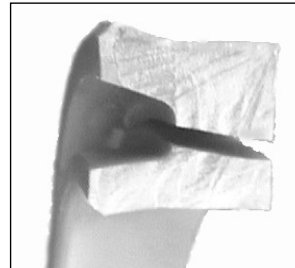


Fig. 4: Seal damage, section view

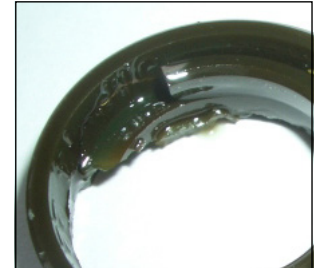


Fig. 4: Burnt seal

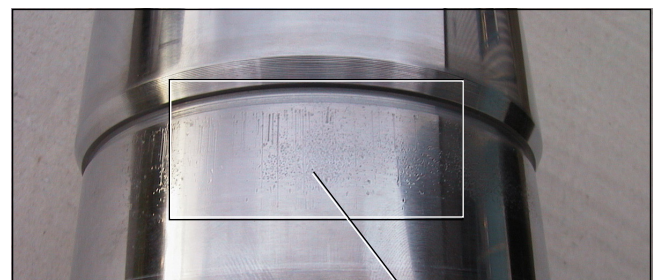
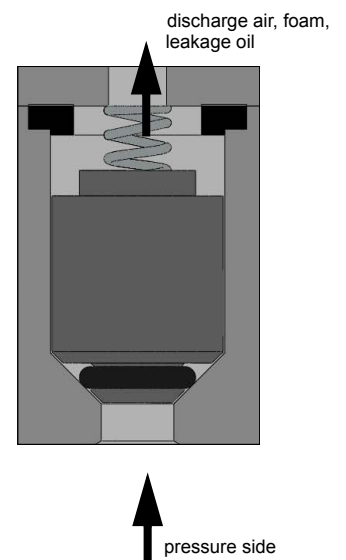
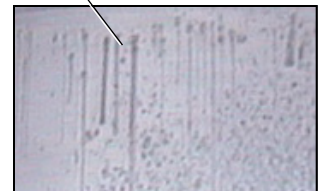


Fig. 4: Damages to sealing surface



The auto-bleeder cannot work if the pressure does not drop below approx. 2 bar again. In case of negative pressure within the hydraulic system, the auto-bleeder works like a check valve. Therefore, drawing in air is impossible.

Technical Information

SITEMA auto-bleeder

For the prevention of seal damages

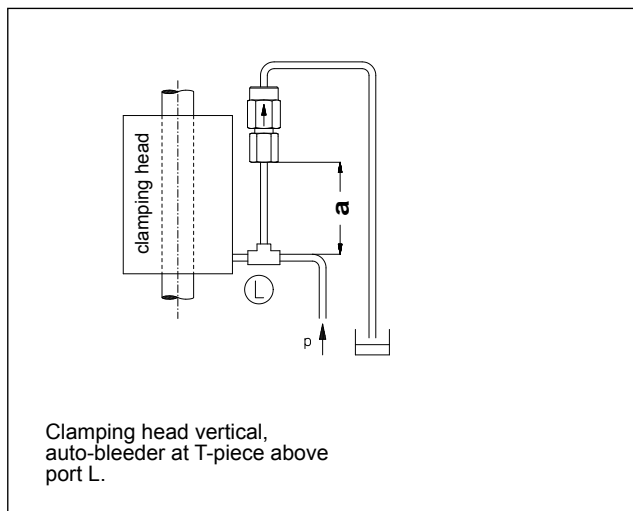
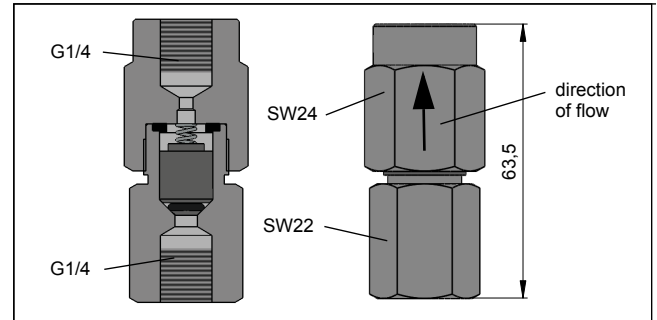
TI-Z10-EN-02/2015

Use

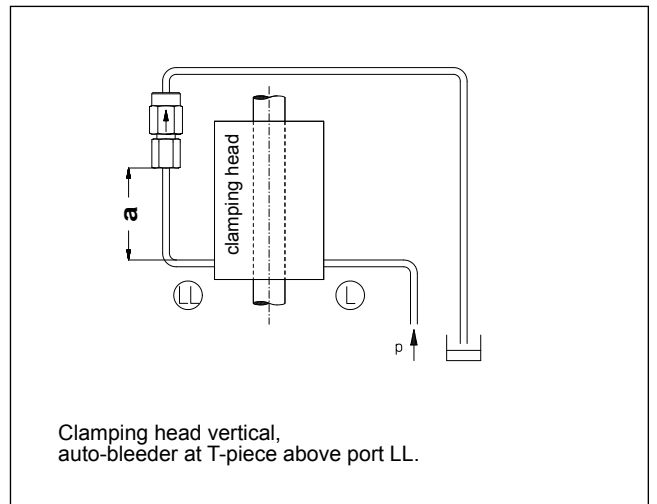
SITEMA offers two different alternatives, either as a separate component or as an integrated version.

1 Separate auto-bleeder EM MEA-4

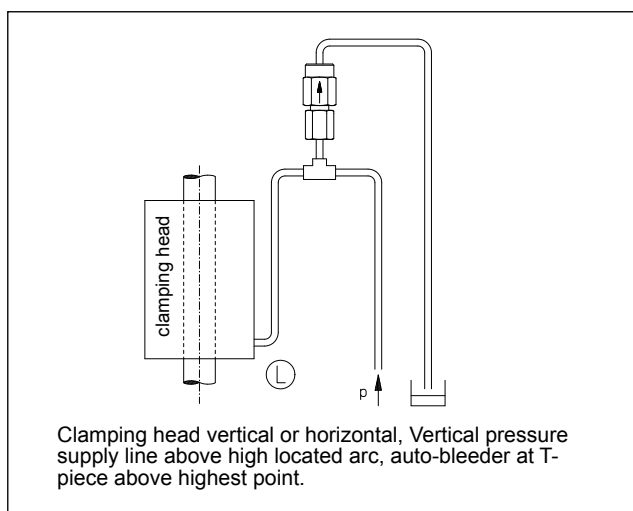
The auto-bleeder is to be installed vertically and above the clamping head with the direction of flow pointing upwards. The pictures show the recommended installation (recommendation: $a > 200$ mm).



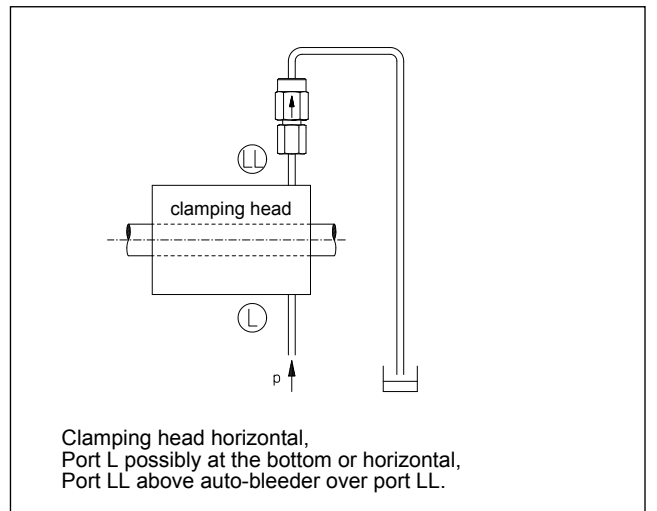
Clamping head vertical,
auto-bleeder at T-piece above
port L.



Clamping head vertical,
auto-bleeder at T-piece above port LL.



Clamping head vertical or horizontal, Vertical pressure
supply line above high located arc, auto-bleeder at T-
piece above highest point.



Clamping head horizontal,
Port L possibly at the bottom or horizontal,
Port LL above auto-bleeder over port LL.

Clamping heads with 2 pressure connections (KB series) need a second auto-bleeder for port K in the same way described above for port L.

⚠ In any case, it is mandatory to connect a pipe or hose to the exit port of the auto-bleeder in order to lead the air-oil mixture exhausted during operation to the tank. The maximum permissible pressure is 400 bar.

2 Integrated auto-bleeder (only available for series K and K/TA)

For Safety Catchers that have sufficient housing wall thickness, are installed in a fixed position (not moving) and are mounted vertically, the auto-bleeder can be integrated as shown in principle drawing Fig. 4.

From the end of 2011, this version is integrated in standard Safety Catchers K 90 and bigger, as well as K/TA 100 and bigger.

For special construction Safety Catchers, the integrated version is available on demand, provided the housing wall thickness is sufficient.

A suitable pipe line provided by the customer has to be led from port E (1) Fig. 4 of the auto-bleeder to the tank to drain the exhausted air-oil mixture. Additional information can be found in the manual delivered with the Safety Catcher.

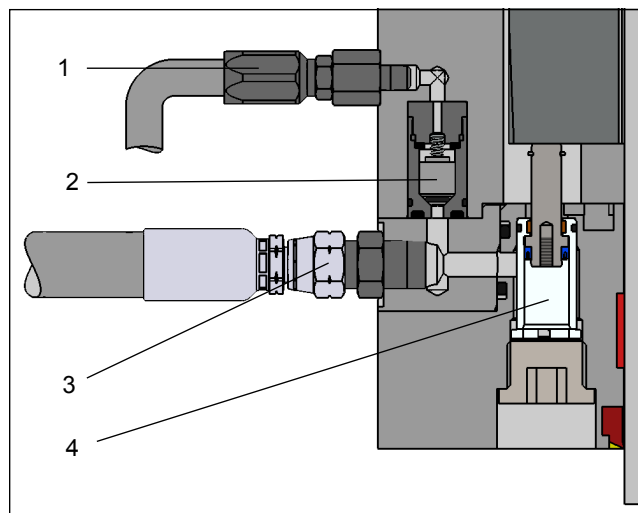


Fig. 4: Auto-bleeder integrated in Safety Catcher series K/TA

- 1 Port E, discharge from auto-bleeder
- 2 Auto-bleeder
- 3 Port L, pressure supply Safety Catcher
- 4 Actuators

⚠ In any case, it is mandatory to connect a pipe or hose to port E (1) Fig. 4 in order to lead the air-oil mixture exhausted during operation to the tank.

Архангельск (8182)63-90-72
Астана (7172)727-132
Астрахань (8512)99-46-04
Барнаул (3852)73-04-60
Белгород (4722)40-23-64
Брянск (4832)59-03-52
Владивосток (423)249-28-31
Волгоград (844)278-03-48
Вологда (8172)26-41-59
Воронеж (473)204-51-73
Екатеринбург (343)384-55-89
Иваново (4932)77-34-06

Ижевск (3412)26-03-58
Иркутск (395)279-98-46
Казань (843)206-01-48
Калининград (4012)72-03-81
Калуга (4842)92-23-67
Кемерово (3842)65-04-62
Киров (8332)68-02-04
Краснодар (861)203-40-90
Красноярск (391)204-63-61
Курск (4712)77-13-04
Липецк (4742)52-20-81
Киргизия (996)312-96-26-47

Магнитогорск (3519)55-03-13
Москва (495)268-04-70
Мурманск (8152)59-64-93
Набережные Челны (8552)20-53-41
Нижний Новгород (831)429-08-12
Новокузнецк (3843)20-46-81
Новосибирск (383)227-86-73
Омск (3812)21-46-40
Орел (4862)44-53-42
Оренбург (3532)37-68-04
Пенза (8412)22-31-16
Россия (495)268-04-70

Пермь (342)205-81-47
Ростов-на-Дону (863)308-18-15
Рязань (4912)46-61-64
Самара (846)206-03-16
Санкт-Петербург (812)309-46-40
Саратов (845)249-38-78
Севастополь (8692)22-31-93
Симферополь (3652)67-13-56
Смоленск (4812)29-41-54
Сочи (862)225-72-31
Ставрополь (8652)20-65-13
Казахстан (772)734-952-31

Сургут (3462)77-98-35
Тверь (4822)63-31-35
Томск (3822)98-41-53
Тула (4872)74-02-29
Тюмень (3452)66-21-18
Ульяновск (8422)24-23-59
Уфа (347)229-48-12
Хабаровск (4212)92-98-04
Челябинск (351)202-03-61
Череповец (8202)49-02-64
Ярославль (4852)69-52-93